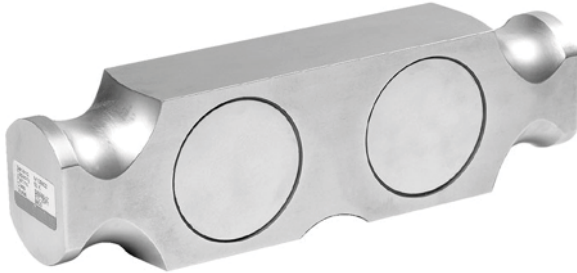


## Double Ended Beam Load Cell



### FEATURES

- Capacities: 25K to 100Klbs
- Environmental protection: IP67 (DIN 40.050)
- Material: stainless steel
- Certified by NTEP class IIII, 10000 divisions

### OPTIONAL FEATURE

- FM approved for use in potentially explosive atmosphere

### DESCRIPTION

The 9803 is a medium to high capacity Double Ended Beam type load cell, made of stainless steel.

This product is designed for use in certified truck and rail scales and is available in capacities from 25K to 100Klbs.

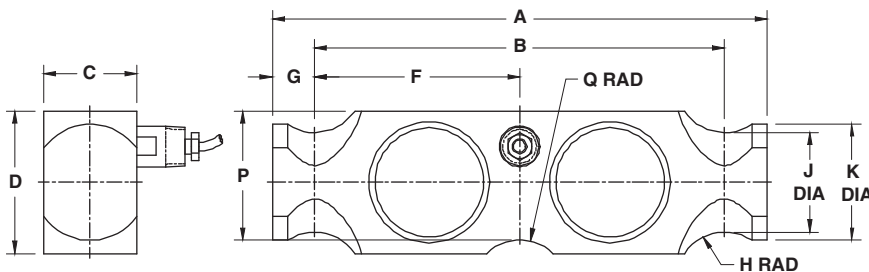
A reliable sealing and mechanical protection of the strain gage area is ensured by the use of potting compound with a metal cover.

This load cell is rated intrinsically safe by the FM system, making it suitable for use in potentially explosive atmosphere.

### APPLICATIONS

- Weighbridges
- Silos, tanks and hoppers

### OUTLINE DIMENSIONS in inches



Capacity	25, 50, 65, 75K
A	10.25
B	8.50
C	1.94
D	2.94
F	4.25
G	0.88
H Rad	1.00
ØK	2.40
ØJ	2.06
P	2.66
Q Rad	1.00

#### Cable specifications:

Cable length:	6m
Excitation +	Red
Excitation -	Black
Output +	Green
Output -	White
Shield	Transparent

Cable screen is not connected to the load cell body

**SPECIFICATIONS**

PARAMETER	VALUE		UNIT
Standard capacities ( $E_{max}$ )	25K, 50K, 65K, 100K		lbs
Accuracy class according to NTEP	NTEP III L	Non-Approved	
Maximum no. of verification intervals (n)	10000d		
Rated output (=S)	3		mV/V
Rated output tolerance	0.003		±mV/V
Zero balance	1.0		±% FSO
Combined error	0.0200	0.0500	±% FSO
Creep error (20 - 30 minutes)	0.0300	0.0300	±% applied load
Temperature effect on zero	0.0090 (0.0010)	0.025	±% FSO/5°C (°F)
Temperature effect on output	0.0072 (0.0008)	0.025	±% applied load/5°C (°F)
Compensated temperature range	-10 to +40 (+14 to +104)		°C (°F)
Operating temperature range	-53 to +93 (-65 to +200)		°C (°F)
Safe load limit	150		% $E_{max}$
Ultimate load	300		% $E_{max}$
Safe side load limit	100		% $E_{max}$
Excitation voltage recommended	10		V
Excitation voltage maximum	15		V
Input resistance	700±7		Ω
Output resistance	700±7		Ω
Insulation resistance	≥5000		MΩ
Environmental protection	IP67		
Element material	Stainless steel		ASTM

FSO-Full Scale Output

**Mounting:**

Correct mounting of the load cells is essential to ensure optimum accuracy and performance. Further information is available upon request.

**VISHAY TRANSDUCERS (VT) SALES OFFICES**

**VT Americas**  
City of Industry, CA  
PH: +1-626-858-8899  
FAX: +1-626-332-3418  
vt.us@vishaymg.com

**VT Netherlands**  
Breda  
PH: +31-76-548-0700  
FAX: +31-76-541-2854  
vt.nl@vishaymg.com

**VMG UK**  
Basingstoke  
PH: +44-125-646-2131  
FAX: +44-125-647-1441  
vt.uk@vishaymg.com

**VMG Israel**  
Netanya  
PH: +972-9-863-8888  
FAX: +972-9-863-8800  
vt.il@vishaymg.com

**VMG Germany**  
Heilbronn  
PH: +49-7131-3901-260  
FAX: +49-7131-3901-2666  
vt.de@vishaymg.com

**VT China**  
Tianjin  
PH: +86-22-2835-3503  
FAX: +86-22-2835-7261  
vt.prc@vishaymg.com

**VMG France**  
Chartres  
PH: +33-2-37-33-31-20  
FAX: +33-2-37-33-31-29  
vt.fr@vishaymg.com

**VT Taiwan\***  
Taipei  
PH: +886-2-2696-0168  
FAX: +886-2-2696-4965  
vt.roc@vishaymg.com  
\*Asia except China