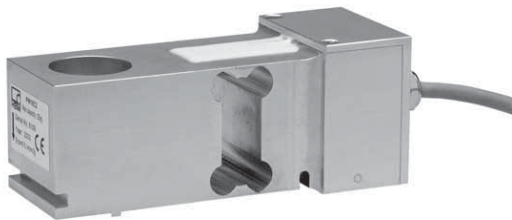
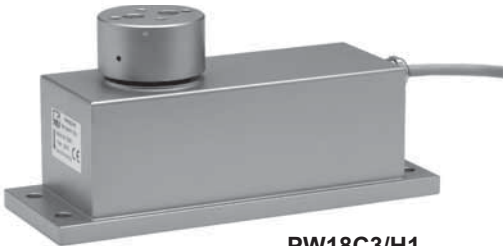


PW18C3 PW18C3/H1

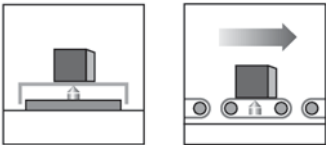
Single point load cells for static and dynamic weighing



PW18C3



PW18C3/H1



Special features

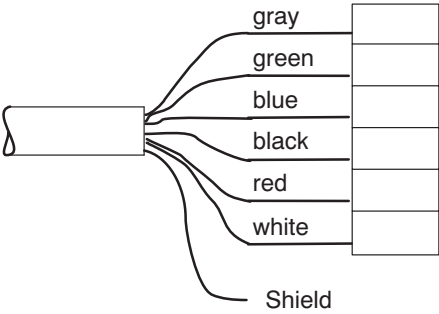
- High accuracy
- High overload limits
- High torsion / bending stiffness
- Protection class IP 67

PW18C3/H1 version:

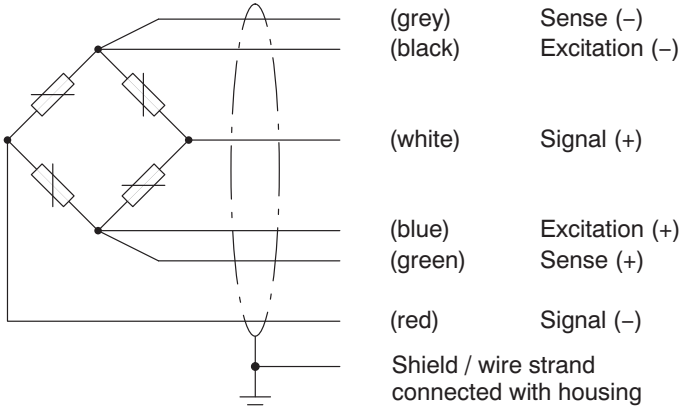
- Integrated vertical overload stops, effective in positive and negative load direction
- Corrosion resistant, laser welded
- Barometric pressure balance
- Protection class IP 66

Abmessungen (in mm)

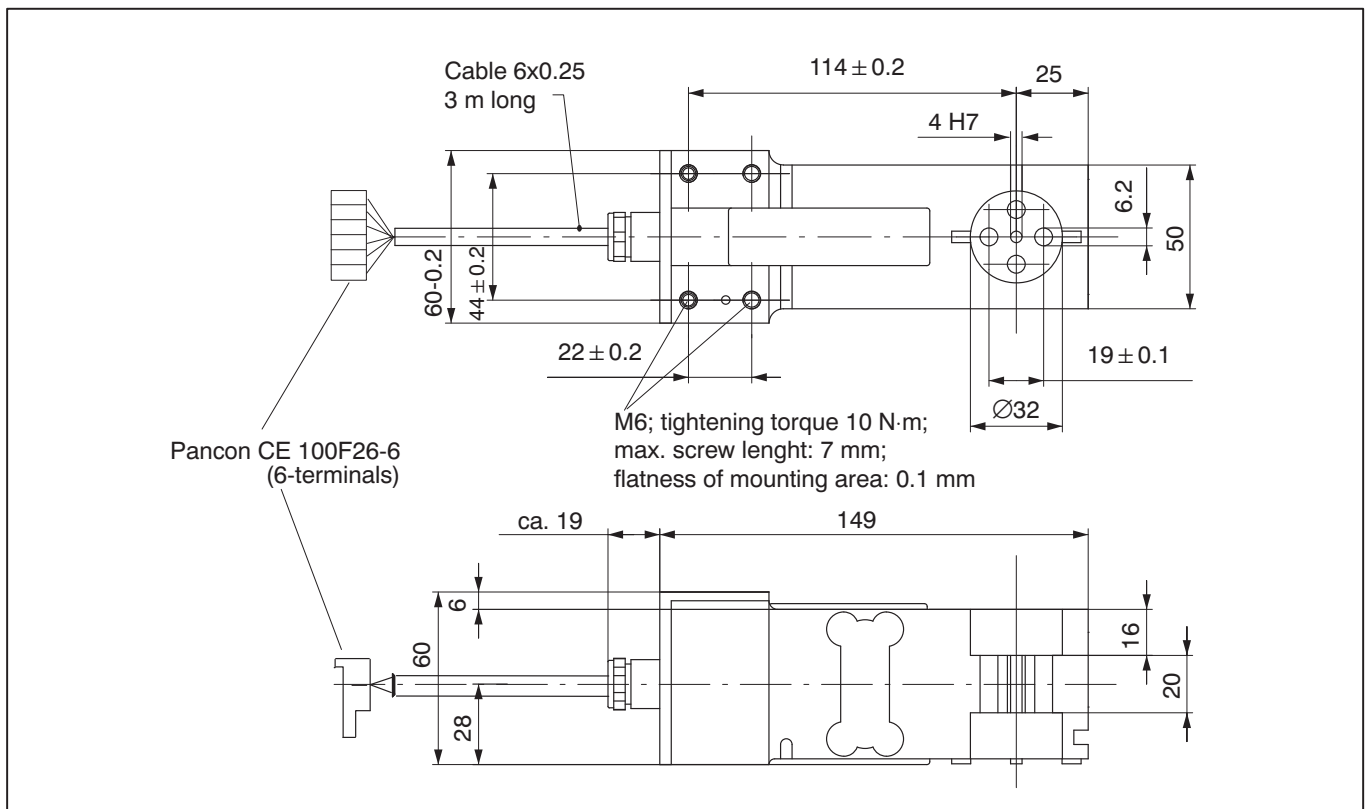
Pancon CE 100F26-6
(6 terminals)



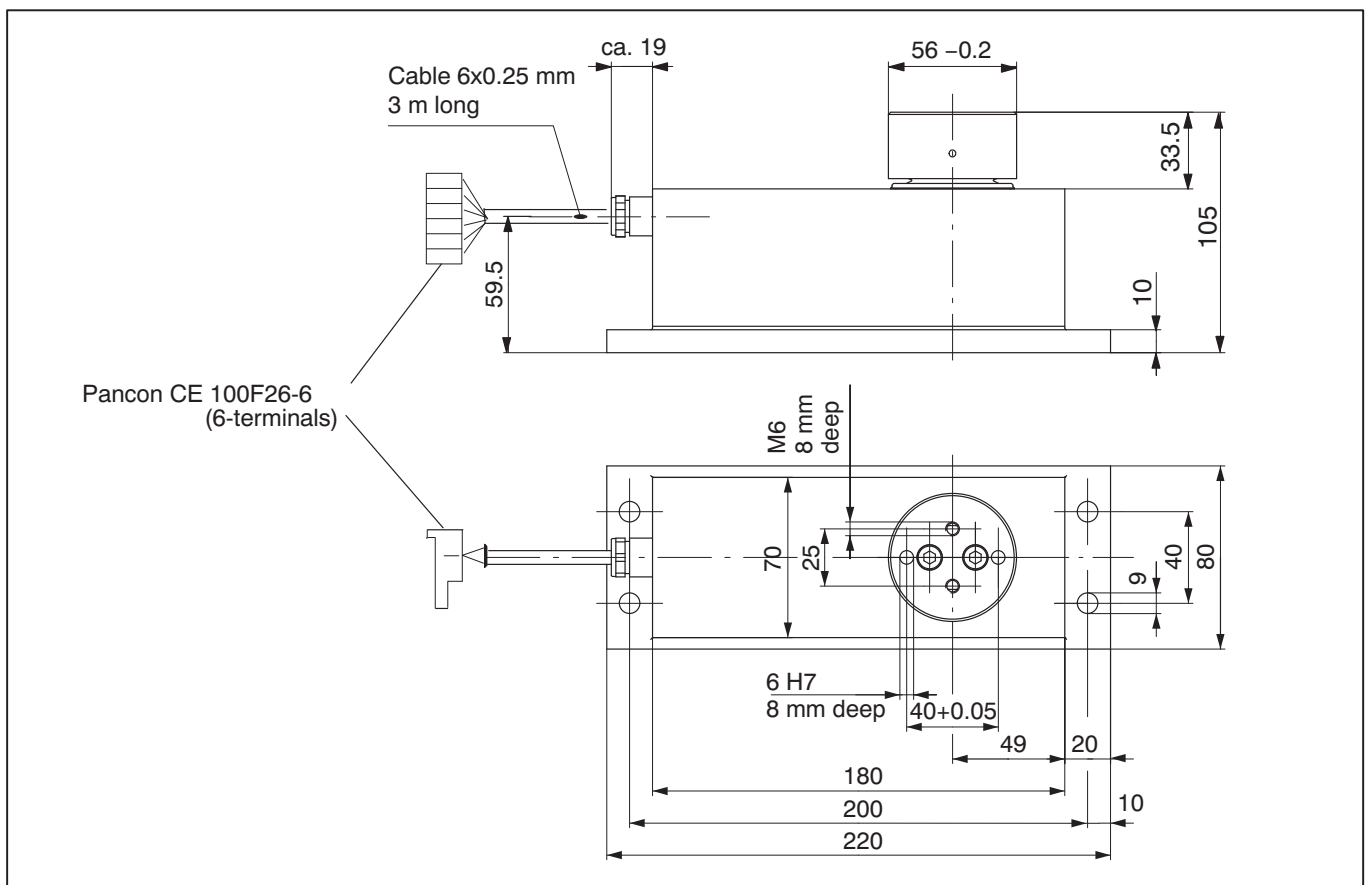
Wiring code (6-wire circuit):



Dimensions of the single point load cell PW18C3 (in mm; 1 mm= 0.03937 inches)



Dimensions of the single point load cell PW18C3/H1 (in mm; 1 mm= 0.03937 inches)



Specifications

Type		PW18C3					PW18C3/H1				
Accuracy class		C3 ¹⁾					C3 ¹⁾				
Max. number of load cell intervals (n_{LC})		3000					3000				
Nominal (rated) Load (E_{max})	kg	5	10	20	50	75	5	10	20	50	75
Min. LC verification interval (v_{min})	g	0.5	1	2	5	10	0.5	1	2	5	10
Temperature effect on zero balance (TK_0)	mV/V	± 0.0140					± 0.0140				
Max. Platform size	mm	400 x 400			600 x 500		400 x 400			600 x 500	
Sensitivity (C_n)	mV/V	1.0 ± 0.1					1.0 ± 0.1				
Zero signal		0 ± 0.1					0 ± 0.1				
Temperature effect on sensitivity (TK_C) ²⁾ Temperature range: +20 ... +40 °C [+68 ... 104 °F] -10 ... +20 °C [+14 ... 68 °F]	% from $C_n / 10$ K	± 0.0175					± 0.0175				
Hysteresis error (d_{hy}) ²⁾	% from C_n	± 0.0166					± 0.0166				
Non-Linearity (d_{lin}) ²⁾		± 0.0166					± 0.0166				
Minimum dead load output return (DR)		± 0.0166					± 0.0166				
Off center load error ³⁾		± 0.0233					± 0.0233				
Input resistance (R_{LC})	Ω	380 ... 500					380 ... 500				
Output resistance (R_0)		350 ... 500					350 ... 500				
Reference excitation voltage (U_{ref})	V	5					5				
Nominal range of excitation voltage (B_U)		1 ... 12					1 ... 12				
Max. excitation voltage		15					15				
Insulation resistance (R_{is}) at 100 V _{DC}		G Ω	> 1					> 1			
Nominal temperature range (B_T)	°C [°F]	-10 ... +40 [14 °F ... 104 °F]					-10 ... +40 [14 °F ... 104 °F]				
Service temperature range (B_{tu})		-10 ... +50 [14 °F ... 122 °F]					-10 ... +50 [14 °F ... 122 °F]				
Storage temperature range (B_{tl})		-25 ... +75 [-13 °F ... 167 °F]					-25 ... +75 [-13 °F ... 167 °F]				
Limit load (E_L) *) *) at max. 20mm Eccentricity	% from E_{max}	300 ⁴⁾					1000				
Lateral load limit (E_{lq}), static		800					800				
Breaking load (E_d)		400					>1000				
Nominal displacement at E_{max} (s_{nom}), approx.	mm	< 0.15					< 0.15				
Weight (G), approx.	kg	0.8					3				
Protection class to EN60529 (IEC529)		IP67					IP66				
Material of the PW18C3: Measuring element Cover Cable sheath		Aluminium Silicone rubber TPE									
Material of the PW18C3/H1: Housing Membrane Cable sheath							Stainless steel Silicone caoutchouc R830 TPE				

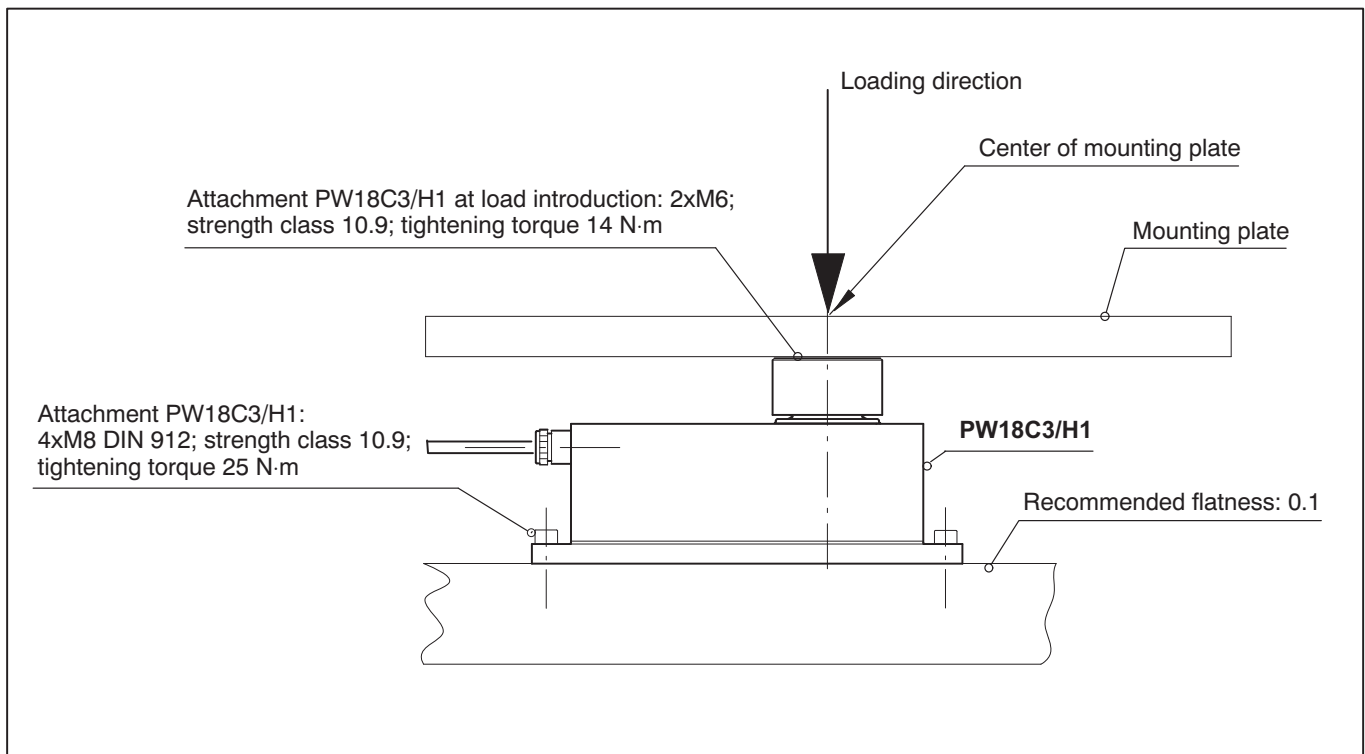
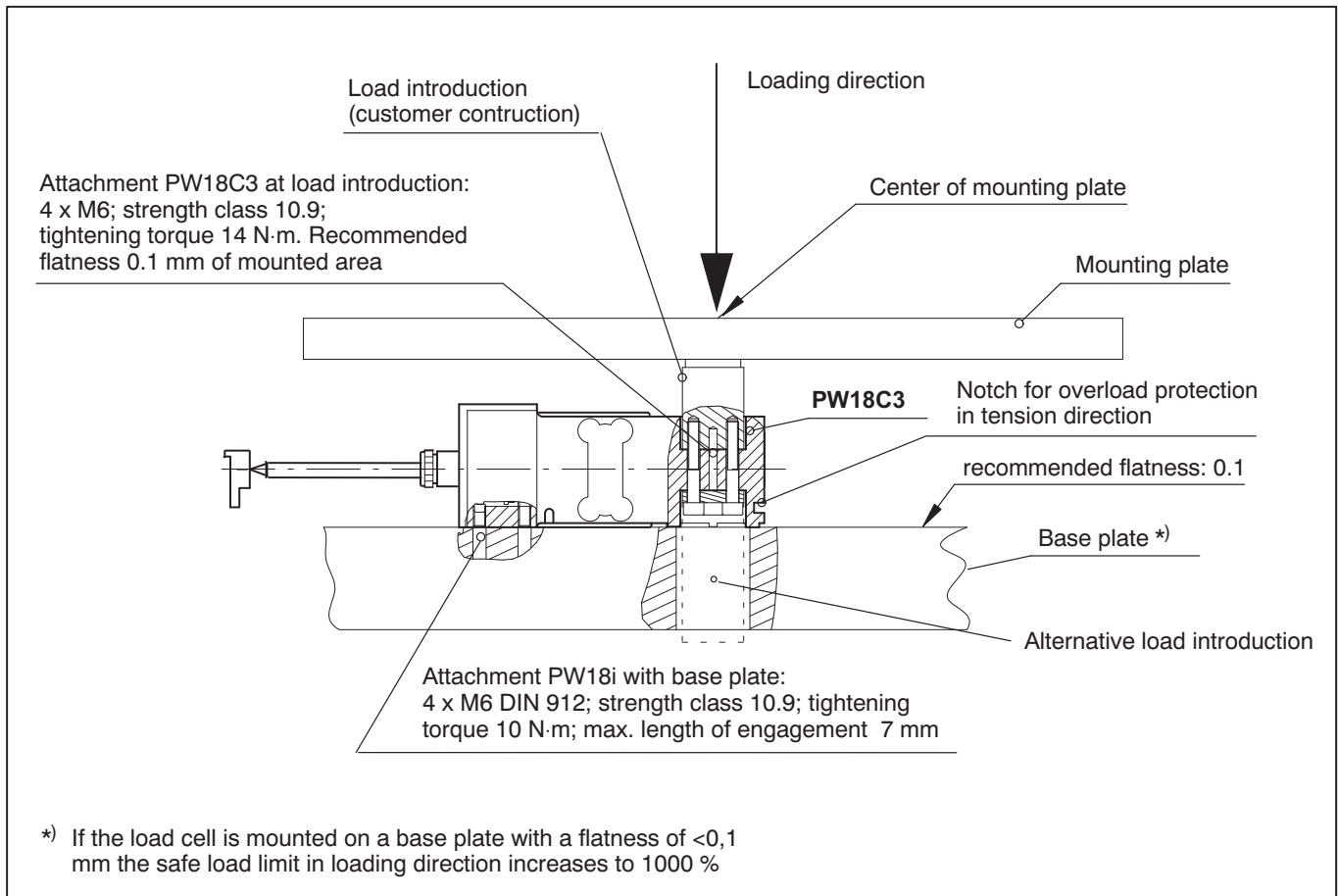
1) According to OIML R60 with $P_{LC} = 0.7$

2) The data for Non-Linearity (d_{lin}), Hysteresis error (d_{hy}) and temperature effect on sensitivity (TK_C) are typical values. The sum of these data meets the requirements according to OIML R60.

3) According to OIML R76.

4) In combination with a grinded baseplate up to 1000% (details please see operating manual)

Mounting hints for single point load cells PW18C3 and PW18C3/H1



Regional Distributor



803, Riqqa Palace Building
Al-Maktum Ave.
P.O.Box 181802 Dubai, UAE
Tel: +9714 - 2270081
Fax: +9714 - 2239962
E-mail: rcsco@eim.ae
www.rcs-co.com

Hottinger Baldwin Messtechnik GmbH

Im Tiefen See 45, D-64293 Darmstadt, Germany
Tel.: +49 6151 8030; Fax: +49 6151 803 9100
E-mail: support@hbm.com www.hbm.com



measurement with confidence