

W1ELA/0

Inductive Displacement Sensor

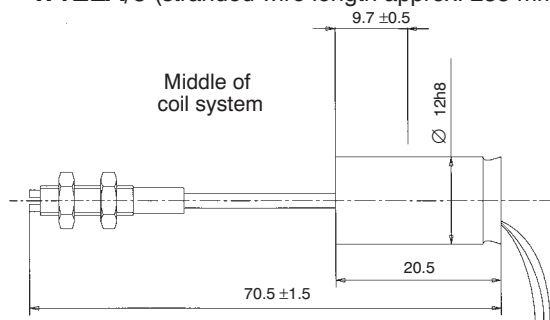


Special features

- Wear-resistant inductive measurement system
- Interchangeability error < 1 %
- Flexible plunger
- With straight-through plunger channel protected against damages due to overstroke
- Summation and subtraction by parallel or antiparallel circuit

Dimensions (in mm; 1 mm= 0.03937 inches)

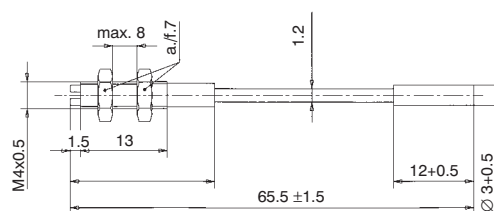
W1ELA/0 (stranded wire length approx. 235 mm)



Plunger in mid position (auxiliary quantity for core assembly, zero balancing see Operating manual)

Dimensional variation to DIN 7168 coarse

Plunger W1ELA/0



Specifications

Transducer type		W1ELA/0
Nominal displacement (Nominal displ. span)	mm	± 1 (2)
Nominal sensitivity (nominal output signal at nominal displacement, output not loaded)	mV/V	± 80
Sensitivity tolerance (deviation of sensitivity from nominal sensitivity)	%	± 1
Nominal output-signal range	mV/V	160
Temperature effect per 10 K in the nominal temperature range on the sensitivity (rel. to the actual value)	%	± 0.2
on the zero signal (rel. to the nominal sensitivity)	%	± 0.2
Linearity deviation (incl. hysteresis rel. to the nominal output-signal range)	%	± 0.2
Nominal excitation voltage (rms value)	V	2.5 ± 5%
Service range of the excitation voltage	V	1...6
Carrier frequency	kHz	4.8 ¹⁾
Protection to EN 60529		IP 20
Nominal temperature range ¹⁾	°C [°F]	-55...+130 [-67...+266]
Service temperature range ¹⁾	°C [°F]	-200...+130 [-328...+266]
Transducer weight, approx.	g	11
Plunger weight, approx.	g	3

¹⁾ The specified standard connection cables may only be used in the temperature range from -20...+80 °C [-4...176 °F].

Permissible accelerations of the displacement transducers

Transducer type		W1ELA/0
Permissible acceleration transducer body	m/s ²	500
Permissible acceleration plunger	m/s ²	1000

Order no.: 1-W1ELA/0-2 (0-2 means accuracy class 0.2)

Accessories (to be ordered separately):

WS/ZB12 Mounting set: Mounting-block set for 3 mounting options for 12 mm diameter

Regional Distributor



803, Riqqa Palace Building
Al-Maktum Ave.
P.O.Box 181802 Dubai, UAE
Tel: +9714 - 2270081
Fax: +9714 - 2239962
E-mail: rcsco@eim.ae
www.rcs-co.com

Hottinger Baldwin Messtechnik GmbH

Im Tiefen See 45, D-64293 Darmstadt, Germany
Tel.: +49 6151 8030; Fax: +49 6151 803 9100
E-mail: support@hbm.com www.hbm.com



measurement with confidence